

Streamline your research with data acquisition and analysis for both *in vitro* or *in vivo* dose response studies.

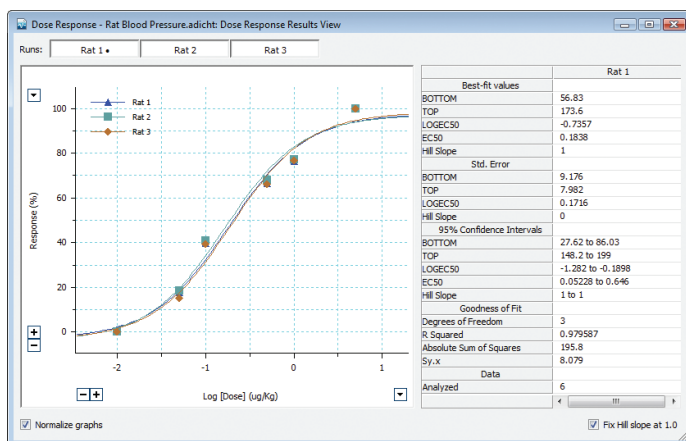
The Dose Response Module for LabChart automatically identifies response markers in your recordings.

Analyze dose response online with live recordings or offline with existing data. Utilize the automatic dose response curve calculations, or customize your own. Generate EC50 values and Hill slopes from selected data.

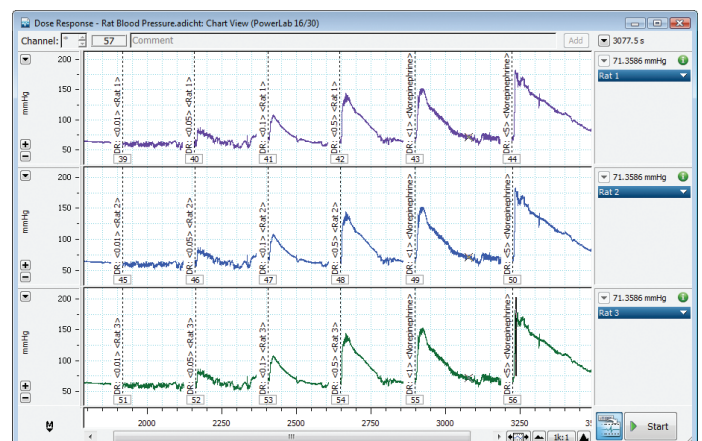
Easily visualize your data by displaying one or multiple response curves per graph. Add comments in Chart View. Convert comments to “Dose Comments” to record dose times and concentrations for further analysis.

Applications

- Muscle contraction studies
- Enzyme activity studies
- Hormone secretion studies
- Blood pressure studies
- Heart rate studies
- Membrane potential studies



Above: Higher doses of norepinephrine increase blood pressure in three different rats. The Dose Response Module Results View displays the fitted response curve and parameters

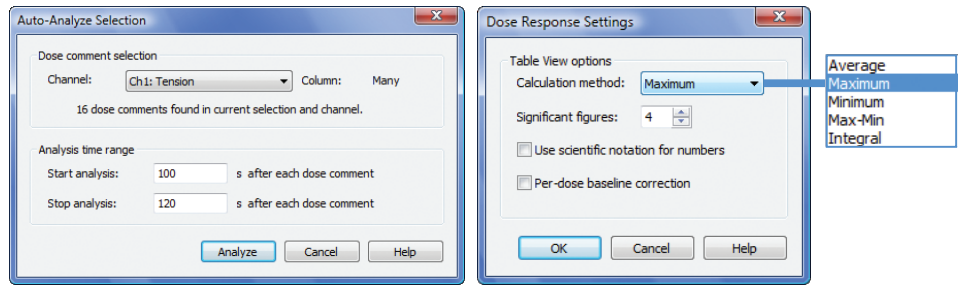


Above: The aortic blood pressure across three rats as higher concentrations of norepinephrine were administered. These data are filtered to show the average pressure per heartbeat



Settings

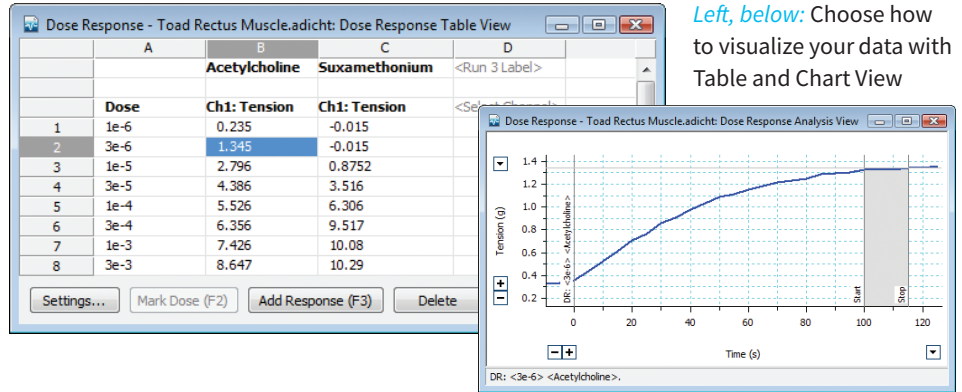
Use manual or automatic dose response curve calculations. Select which parameters to calculate in the Dose Response Settings dialog, such as average, maximum, minimum, amplitude, or integral from each response.



Above: Auto-Analyze Selection dialog with Settings dialog and calculation options.

Table View and Analysis View

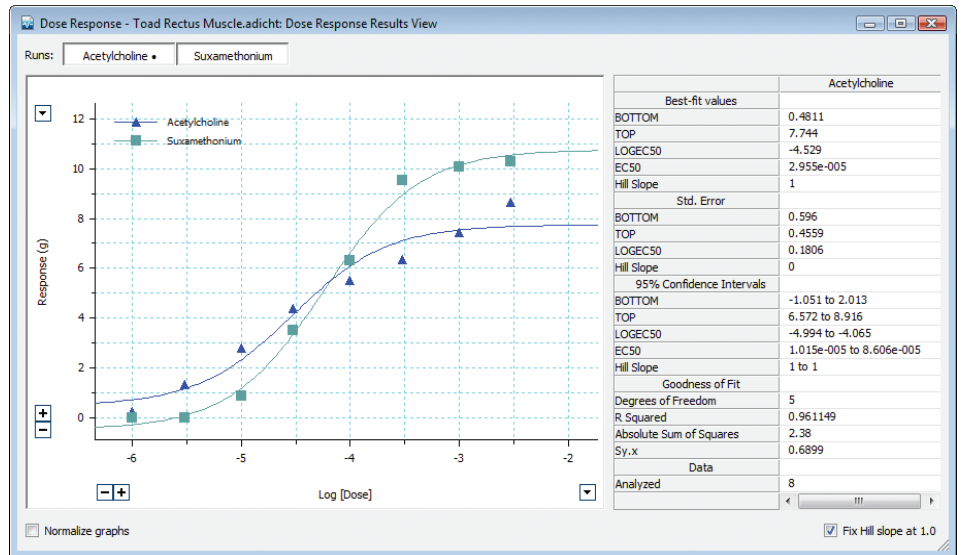
Summarize key information with Table View. Easily navigate between data displays by clicking on any value, as each value in Table View links to the corresponding Chart View. Your results automatically update with each new analysis selection.



Left, below: Choose how to visualize your data with Table and Chart View

Results View

Normalize the curves and change the units on the x-axis through Results View. Results View plots the dose response curve, and calculates parameters (i.e., EC50 and Hill slope) and standard error.

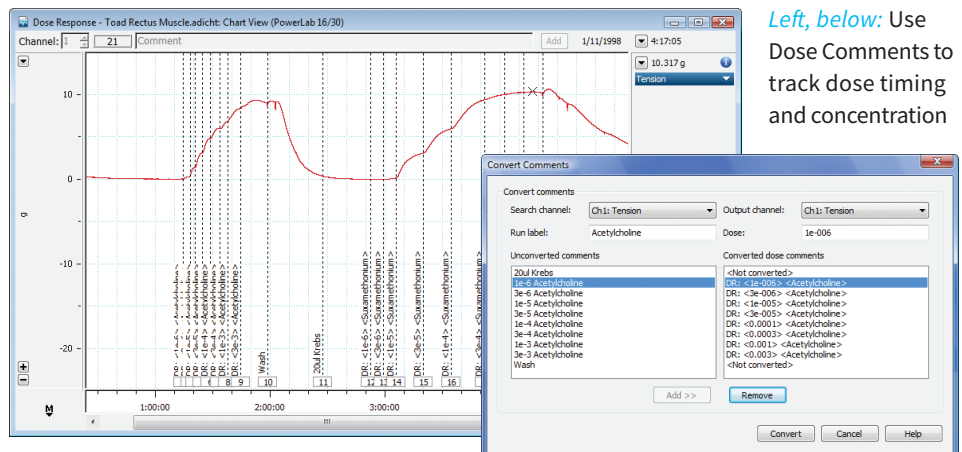


Right: See your dose response curve and parameters side-by-side in Results View

Ordering Information

The Dose Response Module for LabChart can be purchased individually as an Add-On for LabChart 8 (MLS390/8, Windows), or as part of LabChart Pro (MLS260/8).

LabChart Pro includes LabChart software and all LabChart Modules, providing powerful data acquisition and analysis capabilities (available for Windows or Mac).



Left, below: Use Dose Comments to track dose timing and concentration

PowerLab and LabChart are trademarks of ADInstruments Pty Ltd. All other trademarks are the property of their respective owners. Products supplied by ADInstruments are intended for use in research and teaching applications and environments only.



Visit adstruments.com or contact your local ADInstruments representative for more information

Australia | Brazil | Europe | India | Japan | China | Middle East | New Zealand | North America | Pakistan | South America | South East Asia | United Kingdom

adstruments.com



ADINSTRUMENTS