

LabChart

Quick Start

Get set up and start recording

LabChart Quick Start

This guide will help you set up and start using LabChart with the PowerLab data acquisition system. You will be guided through the software installation, and will learn how to set up and record your finger pulse using a transducer.

Detailed setup, analysis and troubleshooting information can be accessed from within the LabChart application:

- **Help Menu** – Provides access to detailed software and hardware information.
- **Welcome Center** – Step-by-step tutorials are available from the Getting Started tab in LabChart for Windows.
- **Refer to the Further Resources** section at the end of this guide for more information.

System Requirements

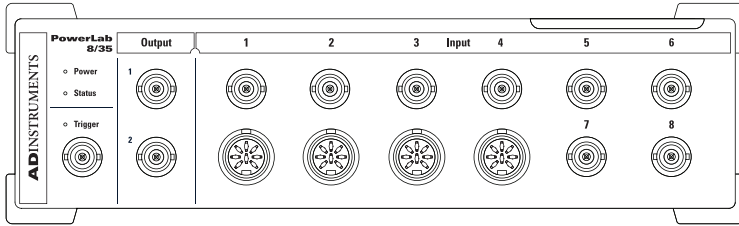
Windows

- LabChart 8.1.5 or later requires Windows 8.1 or later.
- LabChart 8.0 to 8.1.4 are not compatible with Windows 10 or 11, and require Windows 8.1.
- Microsoft .NET Framework 4 or later.
- Internet Explorer 8.0 or later.
- USB Interface for operation with PowerLab.
- Minimum screen resolution of 1280 x 768.

Mac

- OS X v10.8 Mountain Lion or later (LabChart 8.1.1 or later is required for Mac OS X 10.11 El Capitan).
- LabChart 8 Mac is not compatible with the Apple Silicon Mac and requires the x86 Intel Mac SB Interface.

What you will need

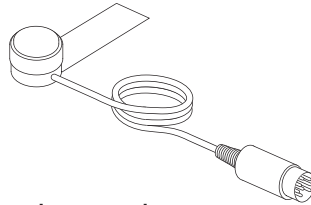


PowerLab

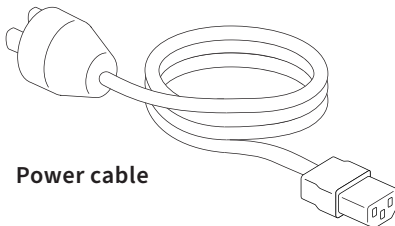


LabChart

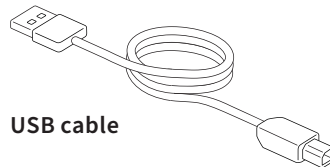
LabChart Installer



Pulse Transducer



Power cable



USB cable



If any item on the packing list is missing or your PowerLab seems to be damaged in any way, please contact your authorized ADInstruments® representative.

What you will do



1. Install LabChart	
2. Start LabChart	
3. Create a New Document	
4. Recording Setup	
5. Sampling	
6. Display	
7. Channel Calculations	
8. Adding Comments	
9. Explore LabChart	
10. Saving / Export	

Appendix

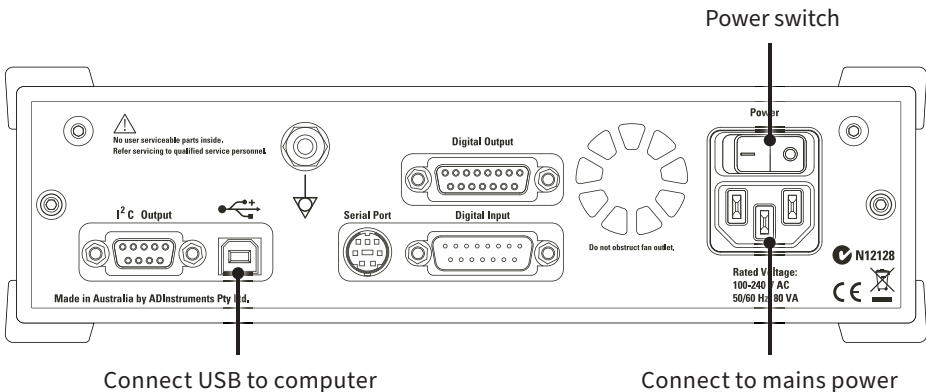
- Additional Information
- Additional Software
- Feature Manager
- Welcome Center
- Further Resources

1. Install LabChart

1. Run the LabChart Setup Installer from the LabChart media device (if supplied) or the downloaded stand-alone installer.
2. The installer will guide you through the installation.
3. When installation is finished, click **Finish**.

Hardware Setup

1. Connect the PowerLab to the mains (AC) using the power cable.
2. Connect the PowerLab to your computer using the USB cable.
3. Turn on the PowerLab using the switch on the back panel.



Multiple Devices

LabChart can record from multiple PowerLabs simultaneously into a single LabChart document or independently into separate LabChart documents.

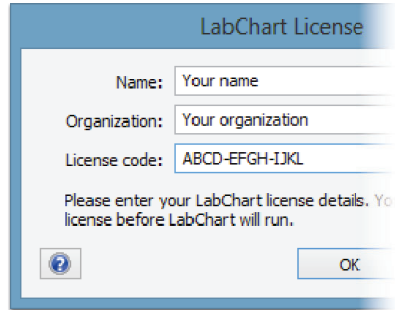
The Devices and Channels dialog allows you to choose which devices to use in a document and you can map LabChart channels to different input sources. See the Help for further information.

You only need one PowerLab to follow the instructions in this guide.

2. Start LabChart

License Registration

1. When you start LabChart for the first time, a dialog will appear asking you to enter your license code.
2. Enter your license details.



LabChart License

Name:

Organization:

License code:

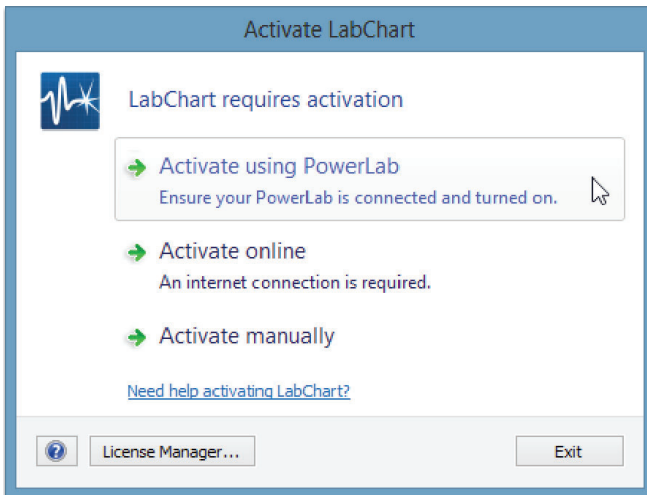
Please enter your LabChart license details. You must enter a license before LabChart will run.

Device Discovery


When LabChart starts, it will scan for compatible devices. If no devices are found, ensure that the PowerLab is properly connected and turned on and click **Device Scan**. You may need to reset the PowerLab by switching it off, then on.

License Activation

Activation is only required once per machine. If a supported PowerLab is already connected and turned on, your license will activate automatically. Otherwise, you may choose online or manual activation.



Activate LabChart

 LabChart requires activation

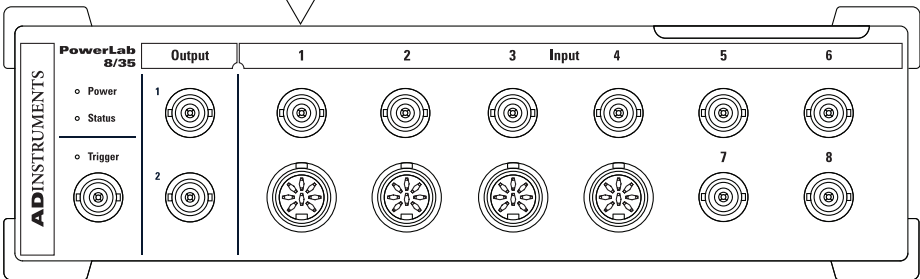
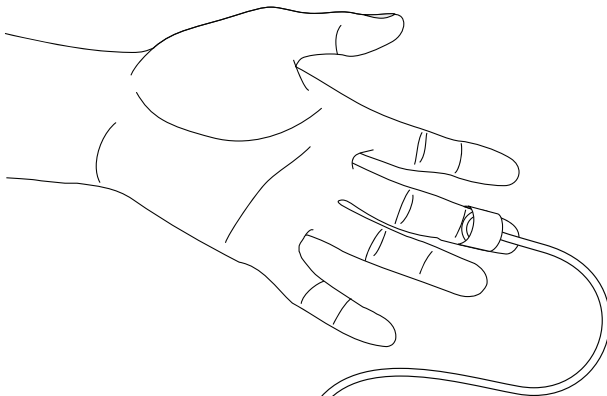
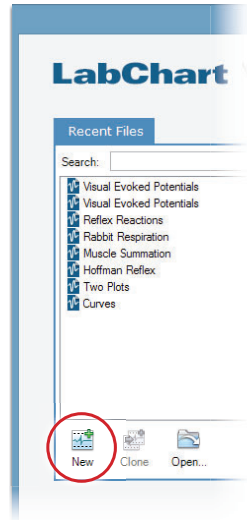
- Activate using PowerLab
Ensure your PowerLab is connected and turned on.
- Activate online
An internet connection is required.
- Activate manually

[Need help activating LabChart?](#)

3. Create a New Document

1. Click the new document icon in the **Welcome Center** to create a LabChart document.
2. Connect the pulse transducer to Input 1 on the PowerLab.
3. Place the pressure pad of the pulse transducer against the tip of the middle finger or thumb. Use the Velcro strap to attach it firmly.

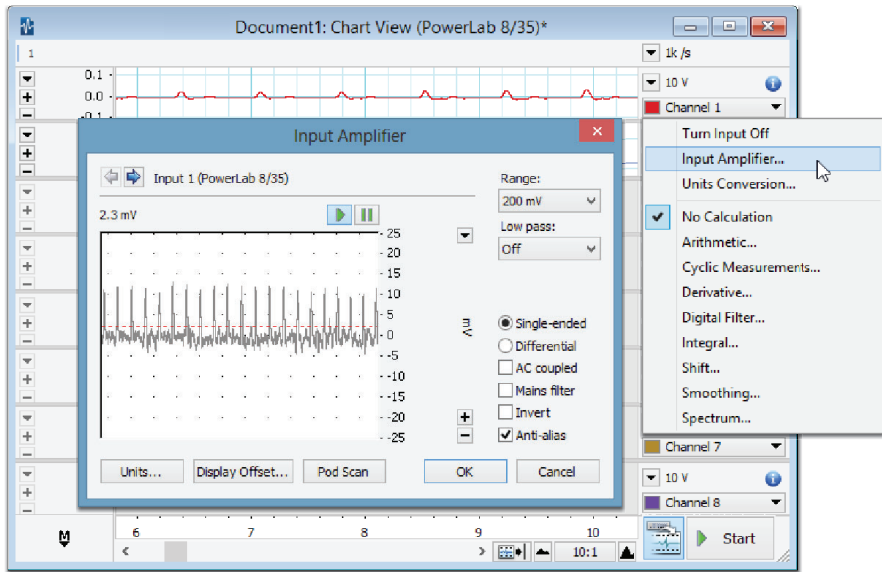
If the strap is too loose the signal will be weak or noisy. If the strap is excessively tight it will reduce blood flow to the finger, causing discomfort and weakening of the signal.



4. Recording Setup

The Input Amplifier allows you to set up the recording parameters and preview the signal using your chosen settings.

1. Click on the Channel 1 dropdown menu.
2. Choose Input Amplifier...
3. Use the Range dropdown list to adjust the sensitivity of the recording.
Choose a range that provides you with a signal that fills 25-75% of the full scale.
4. Click **OK** to accept your settings.

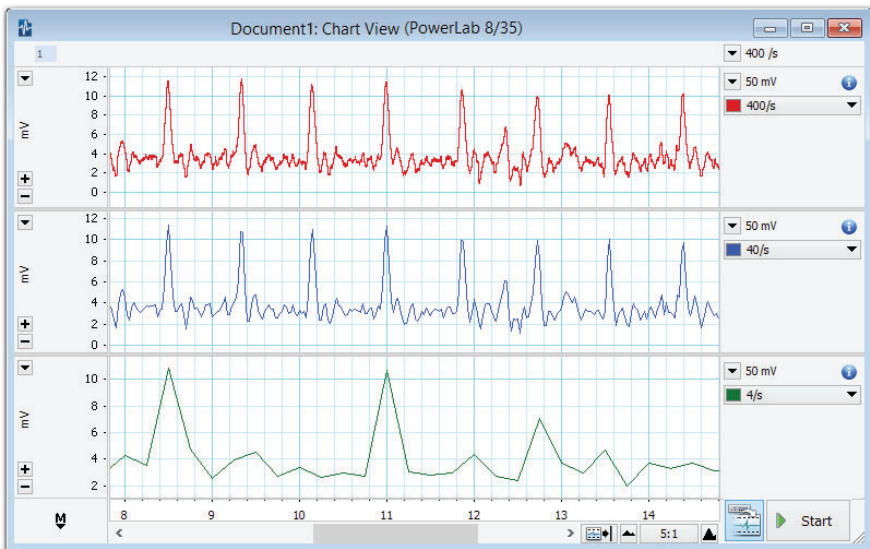
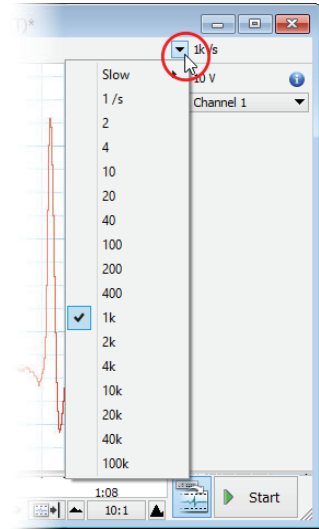


5. Sampling

When the PowerLab digitizes a signal, it records the voltage of the analog signal at discrete instants of time. The number of times that this happens per second is known as the sampling rate.

1. Click the button beside the Rate/Time display to open the Rate dropdown menu.
2. The sampling rates available are listed here.
3. Click **Start** and record for about 20 seconds at the default 1k /s sampling rate.
4. Repeat using sampling rates of 100 and 10 samples per second.

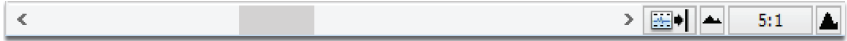
The sampling rate should be set high enough to capture all significant changes in the signal, but low enough to avoid excessive over-sampling.



Data recorded at 400 /s, 40 /s and 4 /s simultaneously into three separate channels.

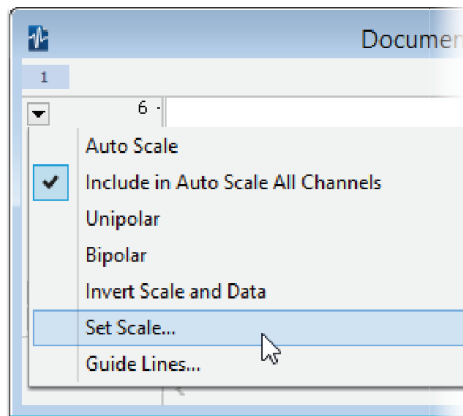
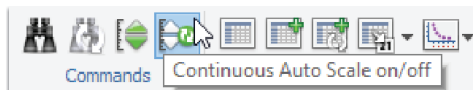
6. Display

The scroll bar can help you move backwards and forwards through your file. In addition to the scroll bar, are the horizontal compression controls. The horizontal scroll and compression controls are the buttons in the bottom part of the Chart View, just to the right of the horizontal scroll bar.



The scale of the (vertical) amplitude axis of each channel can be independently shifted, stretched, compressed or set exactly for optimum data display.

- You can auto scale the axes in all channels simultaneously.
- You can manually set scale appearance options using the scale dropdown menu, accessed either by right-clicking on the vertical axis or clicking the button located at the top left of each channel's amplitude axis.
- Each axis has scaling buttons and the axis can be dragged in various ways.
- You can also continually auto scale the amplitude axes while recording or while reviewing data files by toggling the Continuous Auto Scale toolbar item.

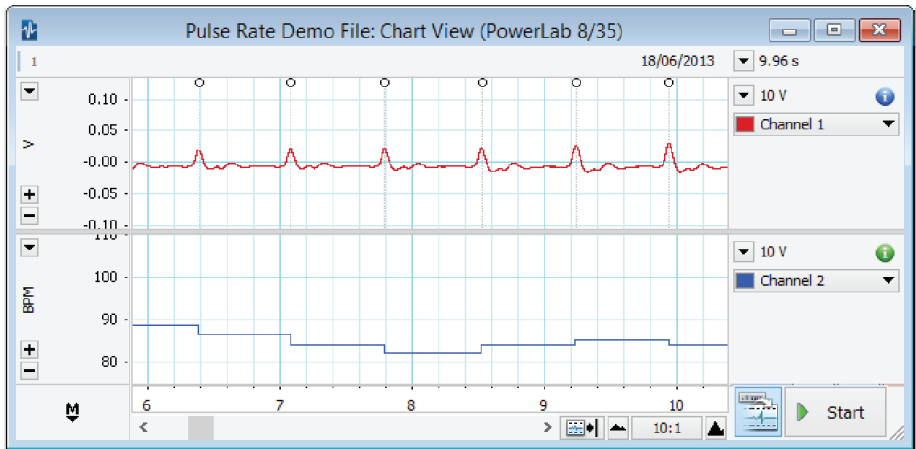
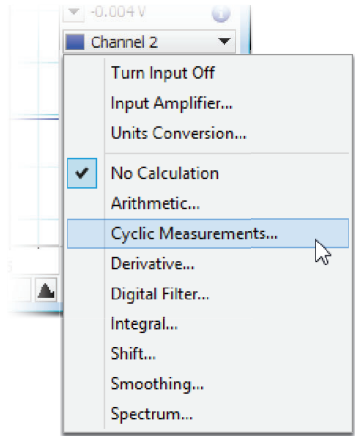


7. Channel Calculations

LabChart allows you to apply calculations to channels of recorded data. The calculated data are generated and displayed dynamically, so that they can be created, modified and removed as necessary.

In this exercise you will use Cyclic Measurements to calculate the heart rate from the raw pulse data in Channel 1.

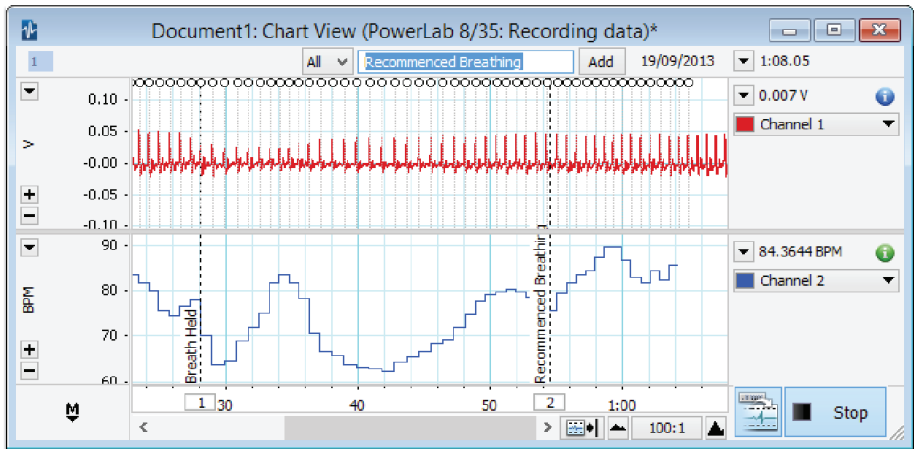
1. In Channel 2, select Cyclic Measurements... from the Channel dropdown menu.
2. In the Cyclic Measurements dialog choose the Cardiovascular - Finger Pulse preset from the detection settings panel.
3. Ensure that source is set to Channel 1, and measurement is set to Rate.
4. Click **OK**.



8. Adding Comments

Comments allow you to annotate your data and they provide a quick and accurate method of locating places of interest.

1. Click **Start** to begin sampling.
2. Click the **Add** button to add a comment with the text in the comment bar. A vertical dotted line appears in the Chart View which marks the comment.
3. Type “*Breath Held*” into the comments bar.
4. After a few seconds of recording, take in a large breath and hold your breath and press the Enter key or click **Add**.
5. After 15-30 seconds of breath holding, start breathing and press the Enter key or click **Add** to add a blank comment.
6. After a few more seconds click **Stop**.
7. Choose **Window > Comments** to open the comments window. The comments window displays a list of all the comments and you can review, edit, delete and find comments.



9. Explore LabChart

Data Pad. Extract and log data and statistics to the Data Pad spreadsheet.

Plots. Create and access histograms, scatter plots, and more.

Commands. Find and select functions and autoscaling.

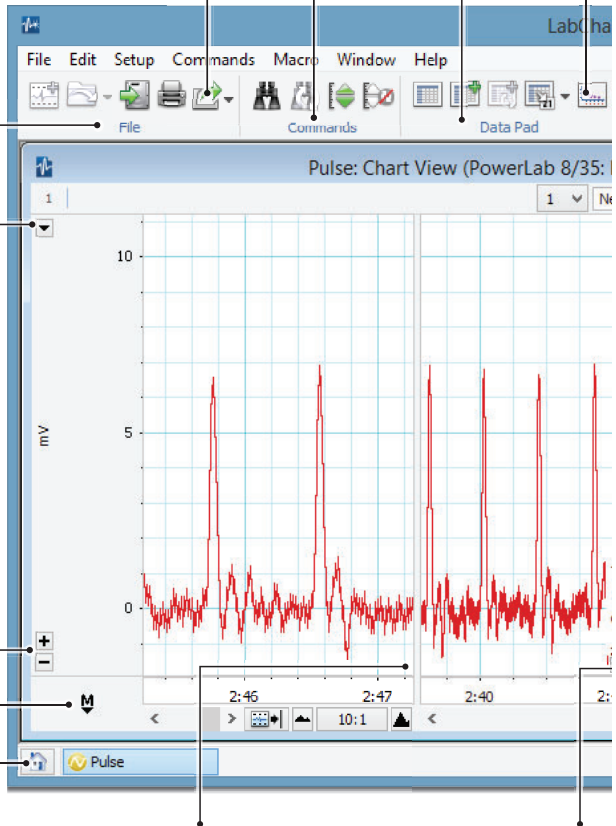
Share. Send and Publish your data.

File. Create, open, save and print files.

Scaling. Compress or expand the amplitude axis using the compression buttons or the scale dropdown menu.

Marker. Drag onto a waveform to mark relative time and amplitude values.

Open the Welcome Center.



Split Bar. Split the Chart View to compare data recorded earlier with data being recorded in real-time.

Comment. Display comments on your recording.

Comments. Add and review text comments.

Comments Bar. Quickly enter comments while sampling.

Windows. Access the different data views and the analysis manager.

Layout. Control window arrangement.

Start and stop recording.

Sampling rate.

Sampling range.

Channel dropdown menu.

Access all of the major channel functions.

Input Amplifier.

Configure sampling settings and preview the signal in real-time.

Units Conversion.

Calibrate the raw data of a channel and apply the appropriate units.

Channel Calculations.

Apply calculations without losing the raw data.

Start and stop recording.

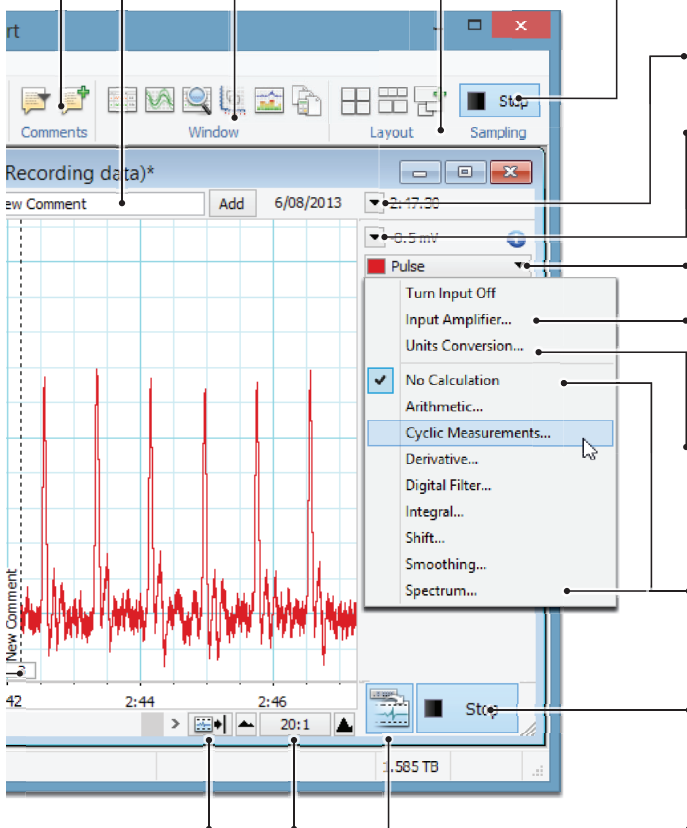
Record/Monitor. Record and monitor sampled data.

Scroll / Review.

Scroll through data while sampling.

Time Axis Compression.

Compress or expand the horizontal axis.

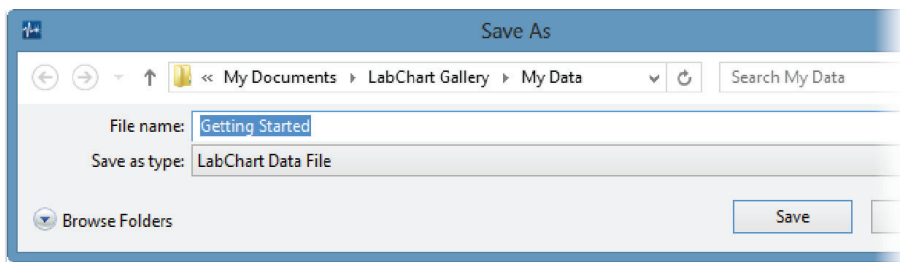


10. Save / Export

Save the current File

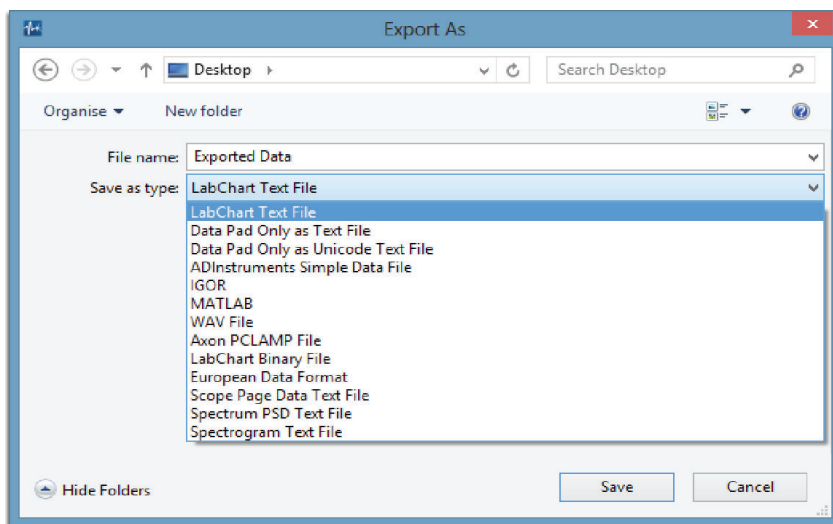
1. Choose **File > Save**.
2. Save your data as a LabChart data file.

Files saved into the LabChart Gallery will appear in the **Welcome Center**.



Exporting data

1. Choose **File > Export...** (Windows) or **File > Export As...** (Mac)
2. Choose the file type to export from the dropdown list.
3. Choose an appropriate name and location and click save.



Additional Information

Chart View

The Chart View is the main window in which data can be viewed in LabChart. The Chart View provides its own Start button, replicating the Start button in the toolbar. The Chart View can display up to 32 channels of data, with up to 16 input channels per PowerLab.

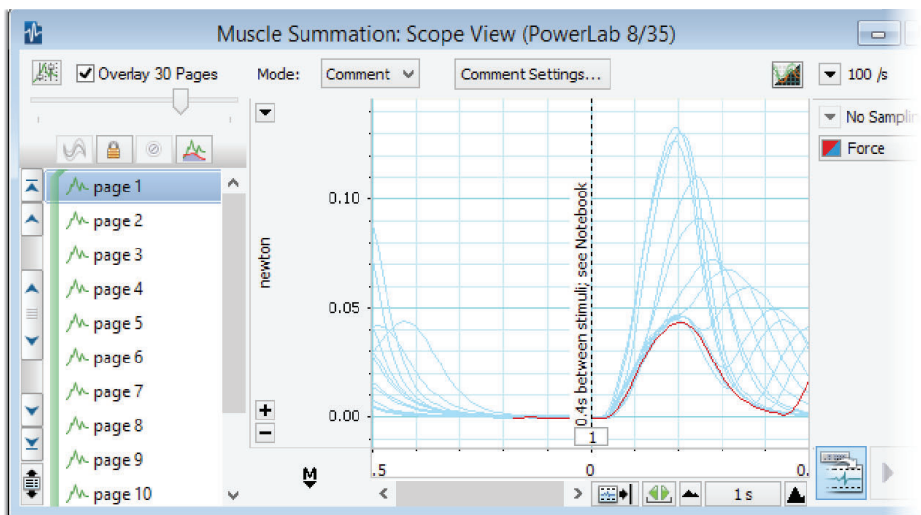
LabChart allows you to apply calculations to recorded data and display the result in a separate channel. The calculated channel data is not actually stored in the file, but generated and displayed dynamically, so they can be updated and changed as necessary. See the Help for further information.

To open the Chart View, choose **Window > Chart View** from the menu.

Scope View

The Scope View provides a different way of looking at the same underlying data that the Chart View displays. Scope View presents data in a similar way to the sweeps of an oscilloscope. Each sweep is recorded to a different page, creating a pad of recorded waveforms, that can be averaged and overlaid. Scope View can generate pages based on blocks, events or comments. See the Help for further information.

To open the Scope View, choose **Window > Scope View** from the menu.



Additional Software

Add-Ons

LabChart Add-Ons include Extensions, Modules and Device Enablers and are software additions to the LabChart application that add extra functionality, such as file translation capability or analysis capabilities for special areas of physiology. For example, the Metabolic Module, which calculates and displays a range of human metabolic variables using data recorded with LabChart, a PowerLab and appropriate front-end signal conditioners. LabChart Add-Ons can be downloaded using the **Feature Manager**.

LabChart Pro

The LabChart Pro package includes full-versions of all the latest LabChart Modules for Windows and Mac.

LabChart Reader

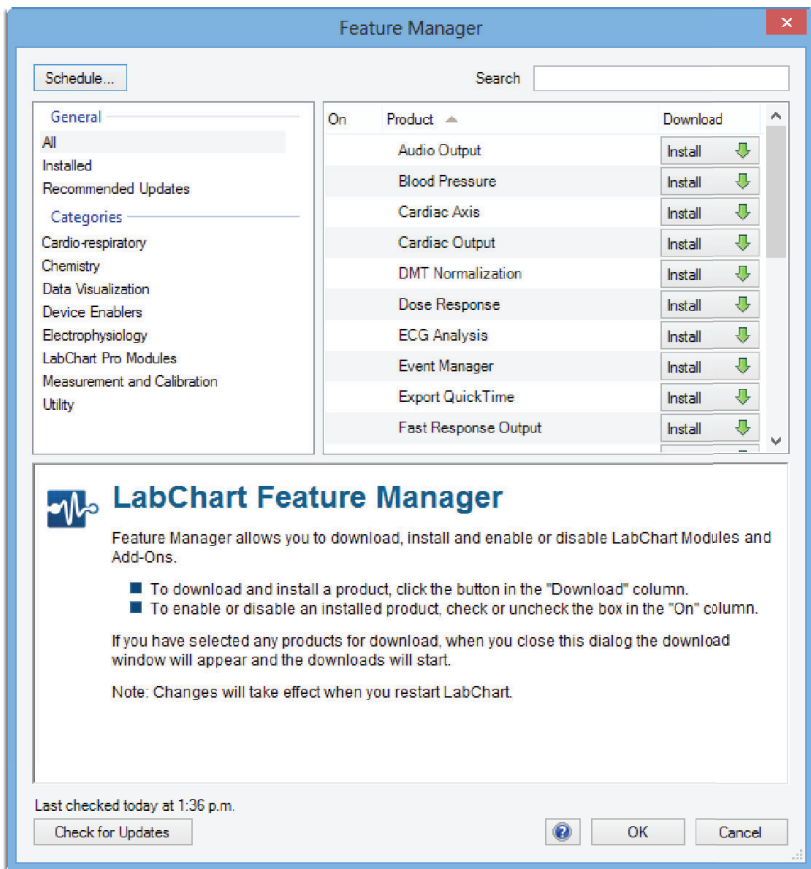
LabChart Reader for Windows and Mac is a free viewer for files created with the LabChart application. LabChart Reader allows you to open and view LabChart data files, and to perform most of the same analysis that can be done with the full LabChart application.

Feature Manager

The Feature Manager allows you to:

- Download and install LabChart software Add-Ons.
- Check for updates of LabChart software and any installed Add-Ons.
- Enable or disable any installed LabChart Add-Ons.
- Browse and search for new software from ADInstruments.

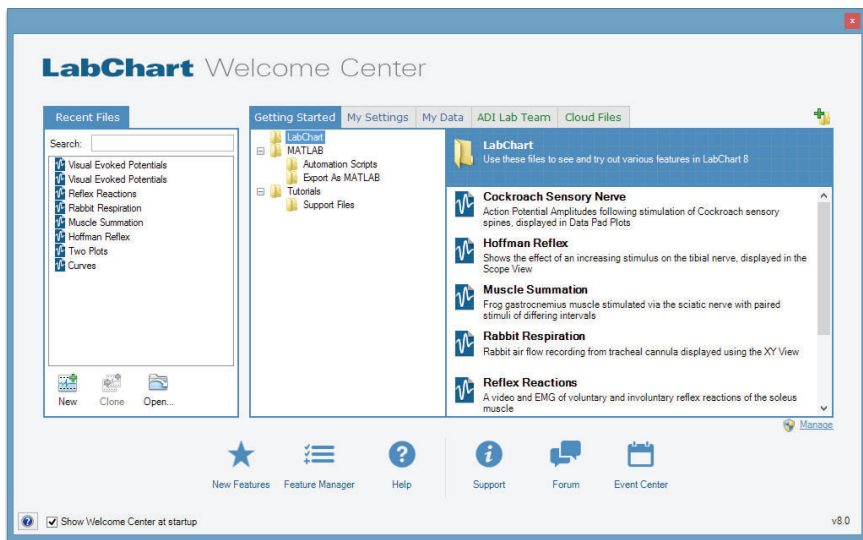
The Feature Manager can be accessed directly by selecting **Help > Feature Manager...** (Windows) or **LabChart > Feature Manager...** (Mac).



Welcome Center

When you first open LabChart you will see the **Welcome Center**, which provides a convenient way to store and access LabChart data and settings files, as well as any related material such as documentation, text files or multimedia files. It also promotes good saving techniques, which is particularly useful when there are multiple users on a computer, such as students in a classroom laboratory.

Adding Files to the Gallery



Add any folder on your computer or network as a tab in the **Welcome Center** gallery by clicking on the add folder icon, including cloud-storage system folders. These tabs are shown in green.



Files saved to the LabChart Gallery folders will also appear in the **Welcome Center**. These are default folders created locally: User > Documents > LabChart Gallery. When you create folders here, these folders and their files appear in the gallery as blue tabs.



You can open the **Welcome Center** by clicking on the home button in the bottom left-hand corner of the LabChart application window or by choosing **File > Welcome Center**.

Further Resources

There are many resources available to help you get the most from your LabChart system.

Help Menu

You can open the in-built LabChart help by choosing **Help > LabChart Help** from the menu. Each dialog in LabChart also has a help button that opens the help page for that topic. You can send feedback on help topics by clicking the send feedback link and entering your feedback in the form provided.

Forum

The ADInstruments forum at adstruments.com/forum provides researchers and educators with an interactive environment for discussion of ADInstruments products and related topics. It is a place you can ask questions and make suggestions – with total anonymity if you prefer. You can also share ideas, tips, tricks and experiments with your peers worldwide.

adstruments.com

Browse our comprehensive array of free-to-download research and teaching resources at adstruments.com. Resources include teaching experiments, software videos, sample data files and more.

You can also use our website for local support queries through a network of offices and distributors in more than 50 countries.

We also provide a number of training and after-sales support services for ADInstruments manufactured products. Training can also include assistance in the configuration and use of the ADInstruments software and hardware systems.

Software License Agreement

By installing, copying or using Software (defined below), Licensee (defined below) agrees to the license terms set forth below. If Licensee does not agree to the terms of this Agreement, Licensee must uninstall the Software and return to ADInstruments any physical copies of the Software in Licensee's possession. The "Effective Date" for this agreement shall be the date Licensee installs the Software.

1. Definitions

"ADInstruments" means ADInstruments NZ Limited, 77 Vogel Street, Dunedin, New Zealand.

"Computer" means any multi-purpose computing device, including, without limitation, a desktop computer, a laptop computer, a network server, or a smartphone.

"Licensee" means the purchaser of a license or licenses to the Software, as designated in the invoice(s) pertaining to the Software license(s).

"Software" means:

- a. the ADInstruments products identified in this Agreement ("ADInstruments Products");
- b. documentation;
- c. any media, printed materials, documents, electronic files (including, without limitation, settings and example data files), illustrations, explanations, or other information that accompanies or is a component of the ADInstruments Products; and
- d. any modifications, upgrades, updates, and/or additions to Software (collectively, "Upgrades") that are not licensed under a separate agreement.

2. Additional License Terms Pertaining to LabChart Products

ADInstruments hereby grants Licensee a license to install and use any LabChart product(s) for which Licensee has purchased a license (including LabChart, LabChart Pro, LabChart Modules, LabChart Extensions, GLP Client, and Scope) on up to three (3) Computers for the purpose of data analysis. Of these three Computers, Licensee may use only one (1) for the purpose of data acquisition, which must be done using a device or devices authorized by ADInstruments ("Authorized Recording Device"), such as a PowerLab unit. Licensee may purchase licenses for additional software seats (i.e., installation on additional Computers) for analysis purposes only. Each additional licensed LabChart product may only be installed on one (1) Computer. Licensee may not make LabChart products available to any other person or organization without the express written consent of ADInstruments. Licensee may make copies of LabChart products for backup purposes. Backup copies of any LabChart product are to be used only to replace the original copy in the event that it is destroyed or becomes defective.

3. Additional License Terms Pertaining to LabChart Online

Licensee agrees, on behalf of Licensee and Authorized Users, to abide by copyright laws governing materials that are accessed on or downloaded from LabChart Online.

Licensee agrees, on behalf of Licensee and Authorized Users, that LabChart Online will not be used for confidential file sharing or for backup data storage. ADInstruments will take no responsibility, nor will it provide compensation, for any issues associated with data uploaded to, or downloaded from, LabChart Online.

Licensee agrees that ADInstruments retains the right to

- i) create limits regarding LabChart Online usage, such as, without limitation, file size;
- ii) restrict, suspend, or terminate any or all LabChart Online services at any time, without notification.

It shall be the responsibility of Licensee and Authorized Users to maintain the accuracy, completeness, confidentiality and current status of account information at all times. LabChart Online may not be accessed using any third party licensee's login and password. Licensee bears sole responsibility for all activity on Licensee's account. It is the responsibility of Licensee to ensure that all content generated by Licensee or Authorized Users is lawful according to the Licensee's local laws and regulations, and is appropriate for the audience who will view it. If Licensee becomes aware of any unauthorized account use or other security breach, Licensee shall promptly notify ADInstruments. For purposes of security, ADInstruments may require Licensee to modify certain account information. ADInstruments reserves the right to investigate suspected breaches of these terms by Licensee and Authorized Users accessing LabChart Online. Inappropriate use of LabChart Online shall be grounds for immediate termination of Licensee's LabChart license, or, alternatively, at ADInstruments' discretion, the modification or removal of all or part of content generated by Licensee or Authorized Users.

4. Additional License Terms Pertaining to LabChart Pro Student License

The LabChart Pro Student License allows the Licensee to install and use LabChart Pro software on a single computer for educational purposes only. The license will expire six months after the license code is entered. The LabChart Pro Student License may not allow all the functionality of LabChart Pro. ADInstruments reserves the right to add or remove features in the LabChart Pro Student License at any time, without notification.

5. Additional License Terms Pertaining to GLP Server Software

ADInstruments hereby grants Licensee a license to install and use GLP Server on a single Computer that functions as a server to GLP Clients. Licensee may make copies of GLP server for backup purposes. Backup copies of GLP Server are to be used only to replace the original copy in the event that it is destroyed or becomes defective.

6. Additional License Terms Pertaining to LabTutor Software Suite Server

ADInstruments hereby grants Licensee a license to install and use LabTutor Server on a single Computer that functions as a server and that is located at a fixed location (i.e., not a mobile computing device). Licensee may make copies of LabTutor Server for backup purposes. Backup copies of LabTutor Software Suite are to be used only to replace the original copy in the event that it is destroyed or becomes defective. The above-referenced LabTutor Server software may be accessed by one or more client Computers. ADInstruments hereby grants Licensee a license to install LabTutor client software on an unlimited number of Computers that function as clients of the server on which Licensee has installed LabTutor Server software. Licensee may permit students, researchers, tutors and other users designated by Licensee (collectively, "Authorized Users") to use LabTutor client software for purposes of completing work (including, but not limited to, conducting experiments) assigned by Licensee.

7. Additional License Terms Pertaining to LabTutor Online

Licensee may permit Authorized Users to access an authorized LabTutor Online server, provided that the number of such Authorized Users must not exceed the number of LabTutor Online licenses that Licensee has purchased. Licensee and Authorized Users whom Licensee permits to use the LabTutor Online server shall have access to the LabTutor Online server for twelve (12) consecutive months from the date that Licensee completes the LabTutor Online activation process ("Initial Term"). However, each individual LabTutor Online license is only valid for a six (6) month period from date of activation. If the Online Server or LabTutor Online licenses are deactivated due to their expiry or other reasons, the Licensee is not entitled to any reimbursement or refund of any fees or unused access time.

Licensee may renew the LabTutor Online license(s) at any time before the expiration of the Initial Term for an additional term of twelve (12) months ("Renewal Term"). The LabTutor Online server will be deactivated if not renewed. Unused licenses will expire if not activated within twelve (12) months. At any time before the expiration of the then-current Renewal Term, Licensee may renew for a subsequent Renewal Term.

Licensee agrees, on behalf of Licensee and Authorized Users, to abide by copyright laws governing materials that are accessed on or downloaded from LabTutor Online.

Licensee agrees that ADInstruments retains the right to create reasonable limits regarding LabTutor Online usage, such as, without limitation, file size.

It shall be the responsibility of Licensee and Authorized Users to maintain the accuracy, completeness, confidentiality and current status of account information at all times. LabTutor Online may not be accessed using any third party licensee's login and password. Licensee bears sole responsibility for all activity on Licensee's account. It is the responsibility of Licensee to ensure that all content generated by Licensee or Authorized Users is appropriate for use in education.

If Licensee becomes aware of any unauthorized access or other security breach, Licensee shall promptly notify ADInstruments. For purposes of security, ADInstruments may require Licensee to modify certain account information. ADInstruments reserves the right to investigate suspected breaches of these terms by Licensee and Authorized Users accessing LabTutor Online. Inappropriate use of LabTutor Online shall be grounds for immediate termination of Licensee's LabTutor Online license, or, alternatively, at ADInstruments' discretion, the modification or removal of all or part of content generated by Licensee or Authorized Users.

8. Additional License Terms Pertaining to LabAuthor

ADInstruments hereby grants Licensee a license to install LabAuthor Software on one or more Computers for the purpose of creating or editing content for use with the licensee's Authorized LabTutor server. Licensee may make copies of LabAuthor for backup purposes. Backup copies of the LabAuthor Software are to be used only to replace the original copy in the event that it is destroyed or becomes defective.

9. LabTutor Images and Videos

- a. License. With respect to the images and videos provided to Licensee within the LabTutor experiments, Image and Media sections of LabAuthor, and LabTutor Image Gallery on ADInstruments' website ("Images" and "Videos"), ADInstruments hereby grants Licensee a non-transferable, non-sublicenseable, license to reproduce and use the Images and Videos solely for the following purposes (the "Permitted Uses"):
 - i. To include the Images in printed or electronic instructional/educational materials, such as laboratory handbooks or instructions for laboratory experiments, that are directly related to Licensee's authorized use of LabTutor or LabChart software packages in education.
 - ii. To include the Videos solely in LabTutor experiments that Licensee creates using the LabAuthor software package.
 - iii. Other uses for which ADInstruments has provided Licensee with its prior written consent.
- b. Restrictions. All Permitted Uses shall be for non-profit, non-commercial, educational purposes only. This license is limited to existing non-profit licensees of the LabTutor software using LabAuthor. Commercial use of the Images or Videos is expressly forbidden. Unauthorized copying of the Images or Videos is expressly forbidden. ADInstruments and its licensors retain all rights in, title to, and ownership of the Images and Videos. Licensee shall take all steps reasonably necessary to protect ADInstruments' and its licensors' ownership rights.
- c. Copyright Notices. Licensee may not represent or cause others to believe that the Images or Videos are Licensee's original works, or that ADInstruments endorses or is affiliated with any entity, product or service. Licensee expressly agrees to display ADInstruments' (and third parties', if any) copyright and proprietary notice(s) with all of the Images and Videos, or any portion(s) thereof, that Licensee uses (e.g., image © ADInstruments 2010).
- d. Patent, Copyright and Trade Secret Indemnity. Licensee agrees to indemnify and hold harmless ADInstruments and its licensors against all liability resulting from or related to any claim of patent or copyright infringement, misappropriation, or misuse of trade secrets or other proprietary rights based upon Licensee's use of the Images or Videos, or any portion thereof, that is not in accordance with the terms of this Agreement.
- e. Third Party Images. Third party images, including, without limitation, historical images used in LabTutor Experiments that are not in the public domain are third party intellectual property. Accordingly, Licensee must obtain licenses to use Images that are not in the public domain from their respective third party owner(s). ADINSTRUMENTS HEREBY DISCLAIMS ALL LIABILITY FOR USER'S INFRINGEMENT OR OTHER VIOLATION OF THIRD PARTY RIGHTS IN THIRD PARTY IMAGES.

10. No Reverse Compiling

Licensee may not reverse engineer, decompile or disassemble the Software.

11. Intellectual Property

Except as expressly permitted by this Agreement, Licensee may not copy the Software. Except as otherwise noted in this Agreement, All ADInstruments software, hardware and documentation is the intellectual property of ADInstruments and is protected by copyright and other applicable intellectual property laws. Except as expressly permitted by this Agreement, Licensee may not alter the Software in any way or create derivative works based on it. ADInstruments' company name, logo and product names constitute registered and common law trademarks of ADInstruments, and ADInstruments retains the exclusive ownership of, and rights to, such marks. All rights not expressly granted are reserved.

12. No Assignment

Licensee may not assign or otherwise transfer any of Licensee's rights under this Agreement. The Software may not be rented, leased, sub-licensed or loaned to any third party.

13. Limited Warranty

ADInstruments warrants the media on which the licensed Software is supplied to be free from defects in materials and workmanship under normal use for ninety (90) days from the date that ADInstruments invoices Licensee for such Software license.

EXCEPT FOR THE LIMITED WARRANTY EXPRESSLY SET FORTH HERE, THE LICENSED SOFTWARE, DOCUMENTATION, AND SUPPORT SERVICES, IF ANY, ARE PROVIDED TO USER ON AN "AS IS" AND "WHERE IS" BASIS AND WITHOUT WARRANTY OF ANY TYPE. THIS MEANS THAT ADINSTRUMENTS SHALL HAVE NO RESPONSIBILITY OR LIABILITY FOR, WITHOUT LIMITATION, ACCURACY OF DATA OR OTHER INFORMATION, DELETION OF DATA OR OTHER INFORMATION (INCLUDING INFORMATION PROVIDED BY ADINSTRUMENTS), DATA STORAGE OR TRANSMISSION

FAILURES, SECURITY, OR PRIVACY.

ADINSTRUMENTS HEREBY EXPRESSLY DISCLAIMS AND EXCLUDES ALL WARRANTIES AND CONDITIONS, WHETHER STATUTORY, EXPRESS, IMPLIED, OR OTHERWISE, WITH RESPECT TO THE LICENSED SOFTWARE AND SUPPORT SERVICES, IF ANY, INCLUDING, BUT NOT LIMITED TO, ANY IMPLIED WARRANTY OF MERCHANTABILITY, FITNESS FOR A PARTICULAR PURPOSE, AND NON-INFRINGEMENT OF THIRD PARTY RIGHTS.

14. Limitation of Liability

ADINSTRUMENTS' MAXIMUM LIABILITY FOR ANY REASON ARISING OUT OF LICENSEE'S USE OF THE SOFTWARE WILL NOT EXCEED THE LICENSE FEE THAT LICENSEE PAYS ADINSTRUMENTS FOR USE OF THE SOFTWARE AT ISSUE. THE FOREGOING LIMITATION OF LIABILITY APPLIES NO MATTER WHAT THE CLAIM IS CALLED, WHETHER BREACH OF CONTRACT, INDEMNITY, BREACH OF WARRANTY, TORT, OR ANY OTHER NAME. UNDER NO CIRCUMSTANCES WILL ADINSTRUMENTS BE LIABLE FOR ANY INCIDENTAL, CONSEQUENTIAL OR SPECIAL DAMAGES RESULTING FROM USE OF THE SOFTWARE.

15. Upgrades

ADInstruments may make Upgrades to the Software from time to time. The terms of this Agreement shall apply to Upgrades.

16. Controlling Law

This Agreement shall be governed, construed and enforced in accordance with the laws of the territory into which the software is sold, or, if sold into the United States of America, by the laws of the State of California, excluding its conflicts of laws principles. The Licensee and the Licensor agree that conflict provisions of the governing law and United Nations Convention on Contracts for the International Sale of Goods shall not apply.

17. Severability

The finding by any court of competent jurisdiction that any provision of this Agreement or part thereof is unenforceable shall not affect the enforceability of the remaining provisions of this Agreement.

16. Termination

This Agreement is effective until terminated. Licensee may terminate this Agreement at any time by (i) permanently destroying all copies of the Licensed Software and documentation in Licensee's possession; (ii) uninstalling all components of the Licensed Software from Licensee's Computer(s); and (iii) notifying ADInstruments in writing of Licensee's intention to terminate this Agreement. ADInstruments may terminate this Agreement if (i) Licensee breaches the terms of this Agreement. Upon termination, all licenses granted herein shall immediately terminate.

17. Agreement Changes

ADInstruments may, at its discretion, change, modify, add or remove portions of the terms and conditions constituting this Agreement. ADInstruments will post any such updated terms and conditions at <http://www.adinstruments.com/license> at least thirty (30) days before any changes become effective.

Licensee's continued use of the Software following the posting of updated terms and conditions shall constitute Licensee's acceptance of such updates.

18. Complete Agreement

This Agreement constitutes the entire agreement between the parties. Amendments and modifications to this Agreement will not be accepted unless in writing and signed by an authorized representative of ADInstruments.

C007F

Copyright © ADInstruments NZ Limited 2021. All rights reserved. PowerLab, MacLab, LabChart, LabTutor and LabAuthor are registered trademarks of ADInstruments NZ Limited. Chart and Scope (application programs), LabTutor Server and LabTutor Online are trademarks of ADInstruments NZ Limited. The names of specific recording units, such as PowerLab 16/35, are trademarks of ADInstruments NZ Limited. Windows 8, Windows 7, Windows Vista, Windows and .NET Framework are trademarks of Microsoft Corporation. Apple, the Apple logo, MacOS, and Macintosh are trademarks of Apple Computer Inc. registered in the U.S. and other countries. Acrobat and Adobe are registered trademarks of Adobe Systems Incorporated. Igor is a trademark of Wavemetrics Inc. MATLAB is a registered trademark of The MathWorks Inc. Grass is a trademark of Astro-Med Inc. All other trademarks are the property of their respective owners.

