

# Kent Device Enabler Installation Guide

## Advice with Installation

- Connect the Kent Scientific device to your computer and switch it on. The driver for the device should be downloaded from the Internet automatically.
- You should already have LabChart (v. 8.1 or later) installed on your computer.
- To install the Kent Scientific Device enabler, use LabChart's Feature Manager (**Help > Feature Manager**) or download the Kent installer from the ADInstruments website and follow the on-screen instructions.
- When you restart LabChart with the Kent device enabler installed, the device enabler loads automatically.

**Note:** Help File documentation will be available in LabChart v.8.1. For technical issues related to operating Kent Scientific devices, please refer to Kent Scientific documentation. For technical issues relating to using Kent Scientific devices with LabChart, please refer to the Troubleshooting steps below.

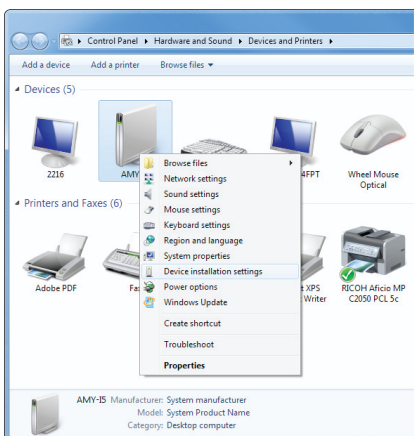
## Troubleshooting Driver Installation

It may be necessary to configure your Windows® operating system to allow Windows to check for the driver online. Alternatively, to manually download the driver, go to [www.ftdichip.com/Drivers/VCP.htm](http://www.ftdichip.com/Drivers/VCP.htm). Kent Scientific devices use the FTDI USB interface driver.

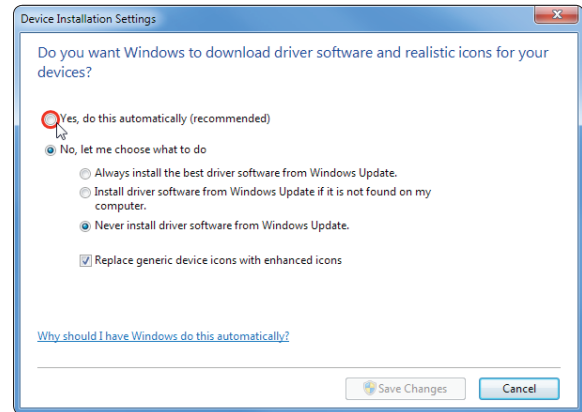
### In Windows 7:

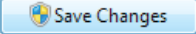


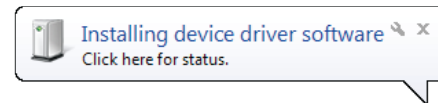
- Click on this information bubble, which should guide you through changing your settings to automatically search for drivers on the Internet.
- If this does not work, go to the Start menu and select **Devices and Printers**. In the dialog that appears, select your computer and then right-click to open a drop-down menu:



- In the menu, select 'Device installation settings'. This will open the following dialog:

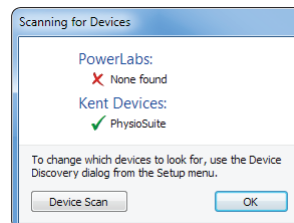


- In this Windows 7 dialog, select the option: 'Yes, do this automatically (recommended)' to allow automatic driver updates.
- Click on .
- When you reconnect the device to your computer or launch LabChart, a reassuring dialog should now appear, such as:



## Getting Started with LabChart

With the Kent Device Enabler installed and a Kent Scientific device connected to your computer and switched on, launch LabChart. You should see the following **Scanning for Devices** dialog:

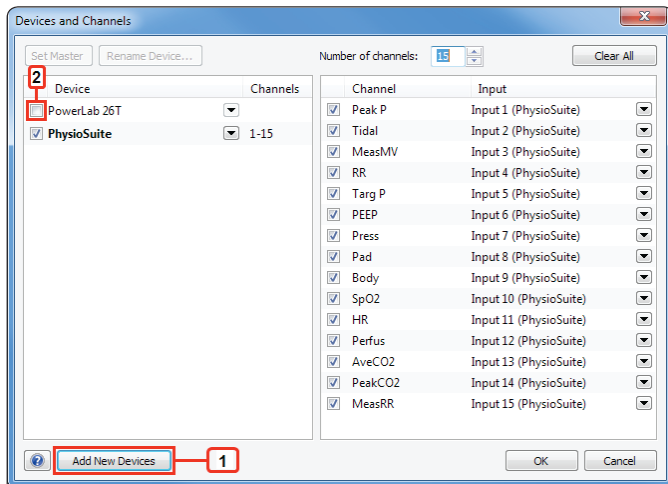


In LabChart's Scanning for Devices dialog, the green tick indicates that a Kent device has been found by LabChart. Click OK to proceed.

**Note:** If a red cross appears for Kent Scientific Devices, click the Device Scan button to repeat the device scanning process. If this process still does not find the Kent Scientific device, check the device is switched on and connected to your computer via a mini-USB cable. Refer to the Troubleshooting Driver Installation section above.

## To record data simultaneously with a PowerLab and Kent Scientific device:

Each Kent Scientific device outputs a fixed number of parameters and each parameter is streamed into a separate LabChart channel. The mapping of parameters to LabChart channels is performed in LabChart's Devices and Channels dialog. To open the dialog, select **Setup > Devices and Channels...**



The Devices and Channels dialog with a Kent PhysioSuite and PowerLab attached to the computer.

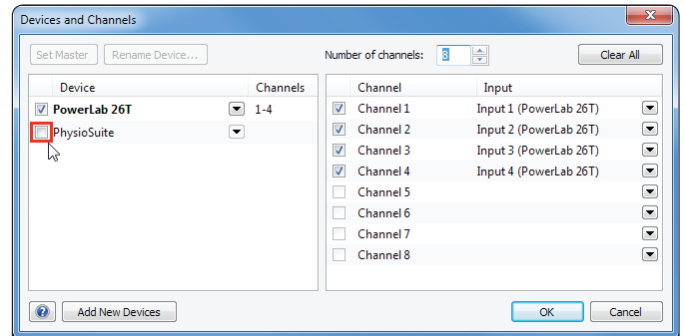
To simultaneously record with a PowerLab, for example, connect the PowerLab to your computer and switch it on.

1. If the device you wish to use does not appear in the left-hand pane, click on **Add New Devices** at the bottom of the Devices and Channels dialog.
2. Next, in the left-hand pane, select the device you wish to use with LabChart, for example, your PowerLab. In the right-hand pane, new LabChart channels corresponding to each Input of your PowerLab will appear.

**Note:** With multiple device recordings, it is recommended to set up the PowerLab as the master device by highlighting the PowerLab and selecting **Set Master**.

To rename or configure the new channels assigned to the PowerLab inputs, select **Setup > Channel Settings...**

If the PowerLab was connected to your computer and switched on when you first launched LabChart, it may be necessary to go to **Setup > Devices and Channels...** and select the Kent Scientific device (see below for the Kent Scientific PhysioSuite device).



**Note:** It is then necessary to go to **Setup > Channel Settings...** and add additional channels, as shown below:

