

## Enhance your LabChart experience with audiovisual recordings synchronized to your biometric data files.

Create live audiovisual recordings or link existing recordings to any biometric data file with the Video Capture Module for LabChart.

Link LabChart to any video camera and card which supports Microsoft DirectShow. Utilize Live Preview to ensure the best video quality before beginning your experiment. Save your recordings as .wmv files for use elsewhere.

Once a recording is complete, playback synchronized audiovisual content and LabChart biometric data to observe corresponding changes simultaneously. Scroll through recordings frame-by-frame using either Movie View or LabChart data navigation.

The LabChart Movie Marker allows you to identify the data point on your recorded signal which corresponds to your current frame.

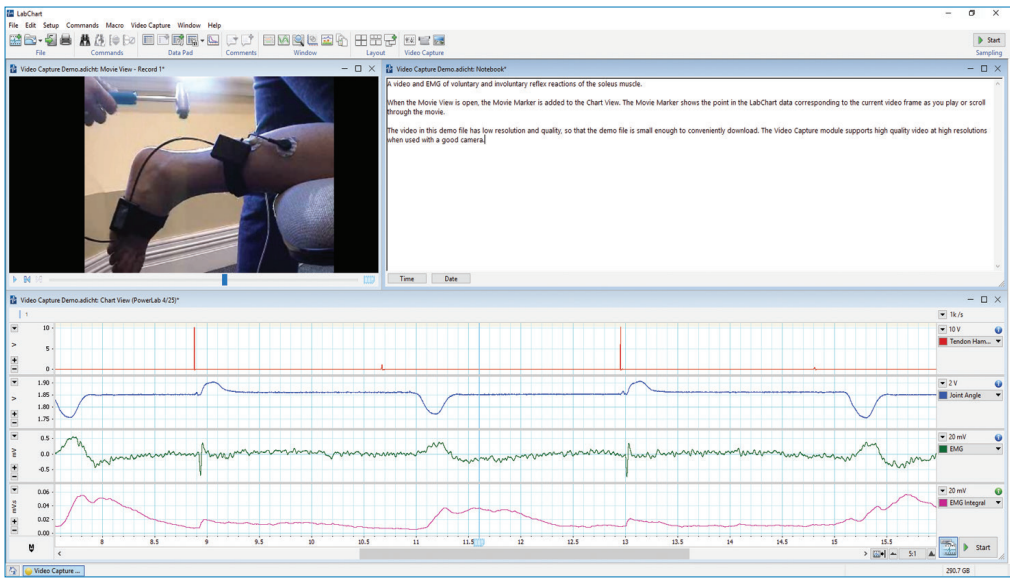
*Right:* Improve your simultaneous data acquisition for video observation studies. LabChart displays Live Preview and Movie View windows next to Chart View and ECG Analysis Table View.



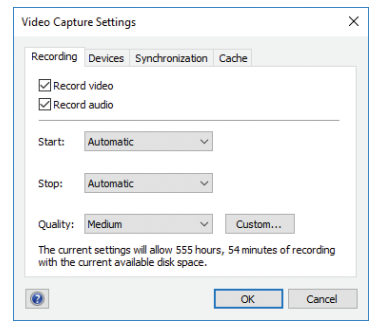
### Applications

- Cognition and Behavior
- Electrophysiology
- Drug Discovery
- Evoked Responses
- Evoked Potential Studies
- Extracellular Recordings
- Heart Rate Variability/ Arrhythmia
- Learning/Memory/Emotion
- Neurophysiology
- Neuroprosthetics
- Pharmacology
- Physiological Response
- Psychophysiology and Stimulus Presentation
- Psychology
- Sleep and Seizure Studies

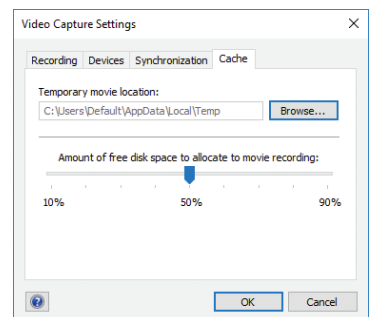
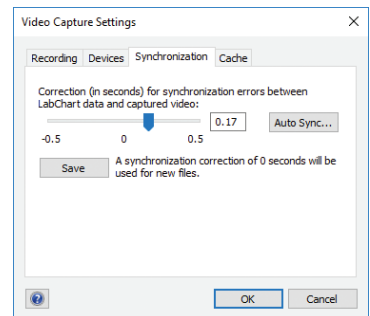
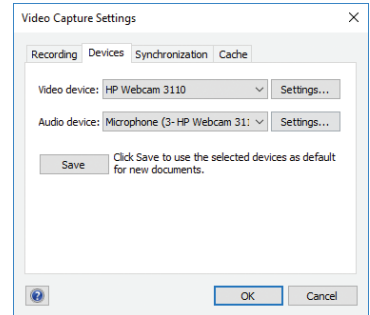




**Above:** Synchronize your LabChart data to a movie of your experiment. In this example, the Chart View shows EMG, Joint Angle, and Tendon Hammer Strikes while replaying the film.



**Right:** Recording, Devices, and Synchronization tabs in the Video Capture Settings dialog.



## Video Capture Module

### Settings

Video Capture allows for settings selections including:

- Video and/or audio recordings
- Hard disk space allocation
- Quality of recording
- Control of start/stop recording
- Video/audio instrument settings
- Synchronization settings of recording devices with LabChart to allow frame-accurate video/data recordings

This module comes with a built-in Video Capture Tutorial to guide you through recording setup in LabChart, including hardware connections, settings, synchronization, recording, and analysis.

**PowerLab**

High-performance data acquisition hardware, re-engineered for unparalleled flexibility.



### Ordering Information

The Video Capture Module for LabChart can be purchased individually as an Add-On for LabChart 8 (MLS320/8, Windows or Mac), or as part of LabChart Pro (MLS260/8).

LabChart Pro includes LabChart software and all LabChart Modules, providing powerful data acquisition and analysis capabilities (available for Windows or Mac).

## Additional LabChart Modules

- Blood Pressure • Cardiac Output • DMT Normalization • Dose Response  
ECG Analysis • HRV • Metabolic • Peak Analysis • PV Loop • Spike Histogram

PowerLab and LabChart are trademarks of ADInstruments Pty Ltd. All other trademarks are the property of their respective owners. Products supplied by ADInstruments are intended for use in research and teaching applications and environments only.



Visit [adstruments.com](http://adstruments.com) or contact your local ADInstruments representative for more information

Australia | Brazil | Europe | India | Japan | China | Middle East | New Zealand | North America | Pakistan | South America | South East Asia | United Kingdom

[adstruments.com](http://adstruments.com)



**ADINSTRUMENTS**