

MLA0115 ECG Lead Switch Box

Accessories

Description

The MLA0115 ECG 12 Lead Switch Box allows the user to easily switch between standard ECG lead configurations. It gives direct measurement of leads I, II, III, aVF, aVL, aVR and V₁ to V₆. The MLA2510 Shielded lead wires (snap-on) are supplied.

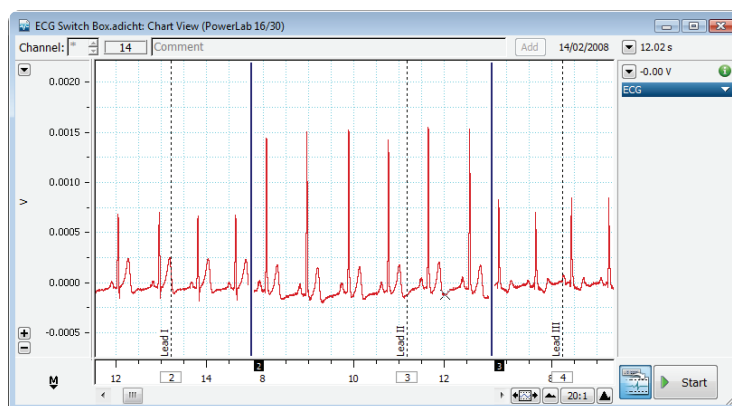


MLA2510

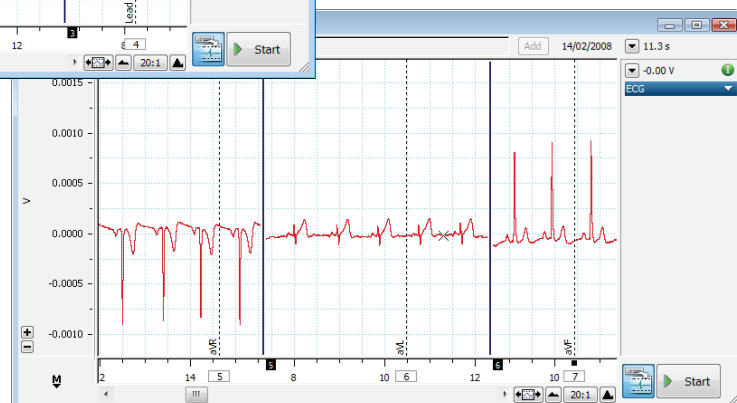
Three options are available. The MLA0115/A is suitable for use with the FE231 Bio Amp while the MLA0115/S is suitable for use with the older ML132 Bio Amp and the FE132 Bio Amp. The MLA0115/D is suitable for use with any PowerLab with built-in Dual Bio Amps, the FE232 Dual Bio Amp, the older FE135 Dual Bio Amp, the ML135 Dual Bio Amp and the ML408 Dual Bio Amp/ Stimulator.

NOTE: The output from the MLA0115/D ECG Switch Box is displayed on the first channel of Dual Bio Amp systems. The second channel displays Lead II only.

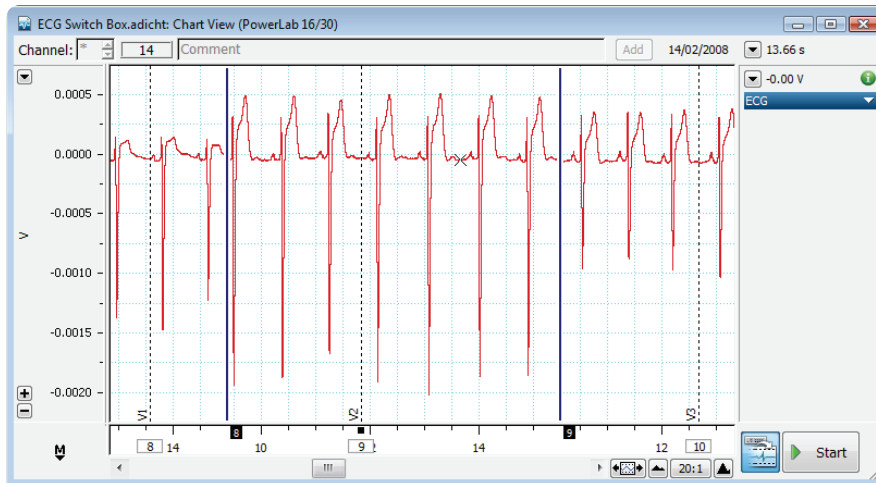
Typical Data



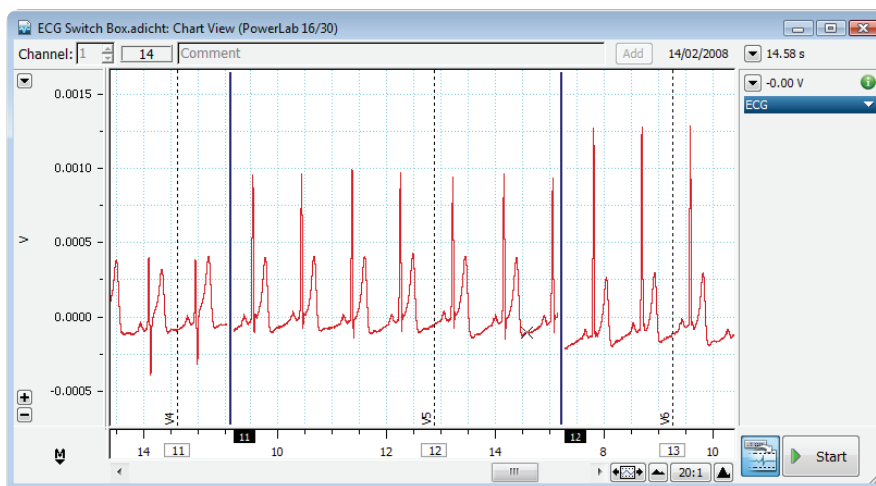
LabChart recording of leads I, II, and III



LabChart recording of leads aVR, aVL and aVF



LabChart recording of leads V_1 , V_2 and V_3



LabChart recording of leads V_4 , V_5 and V_6

Connection

The ECG switchbox has 10 lead connector for LA (Left Arm), RA (Right Arm), LL (Left Leg) and RL (Right Leg) and V_1 to V_6 (Chest).

Leads I, II, III, aVF, aVR and aVL are derived from the four limb leads using the right leg as the reference. The Precordial leads V_1 to V_6 are derived from summed RA, LA and LL signals together with the corresponding chest electrode. In all configurations, the right leg (RL) is used as a common ground.

Bipolar limb leads

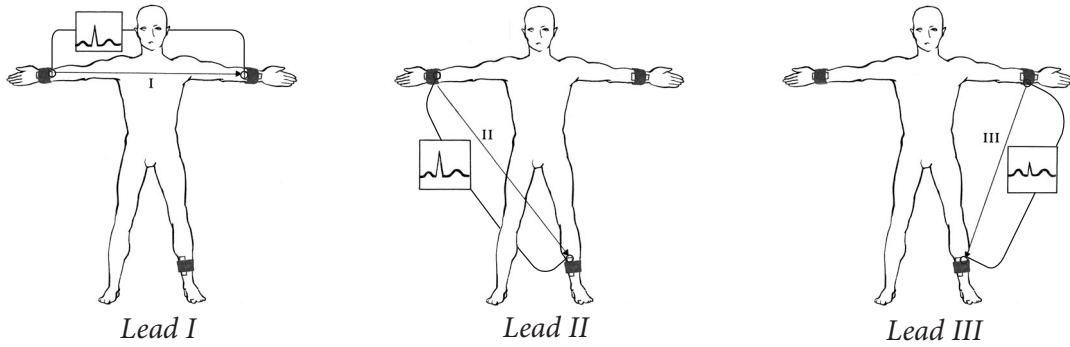


Diagram showing the selection of electrodes for I, II, III using the ECG switchbox and typical signals observed.

Augmented limb leads

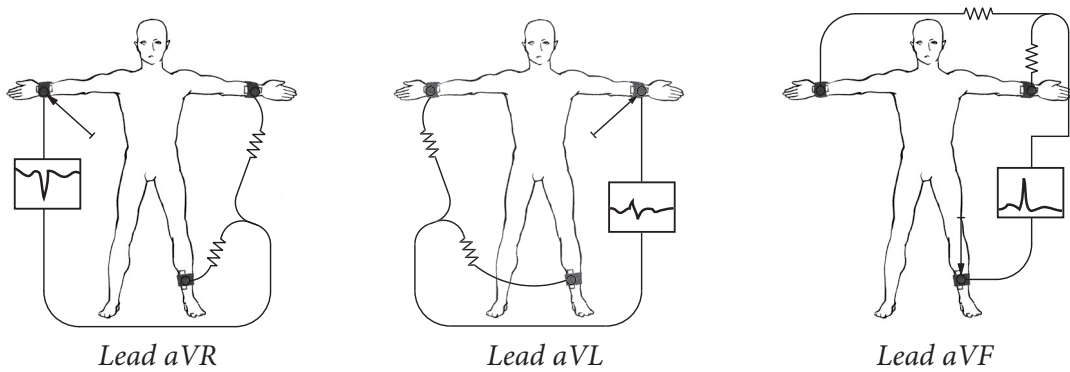


Diagram showing the selection of electrodes for aVR, aVL and aVF using the ECG switchbox and the typical signals observed.

Precordial leads

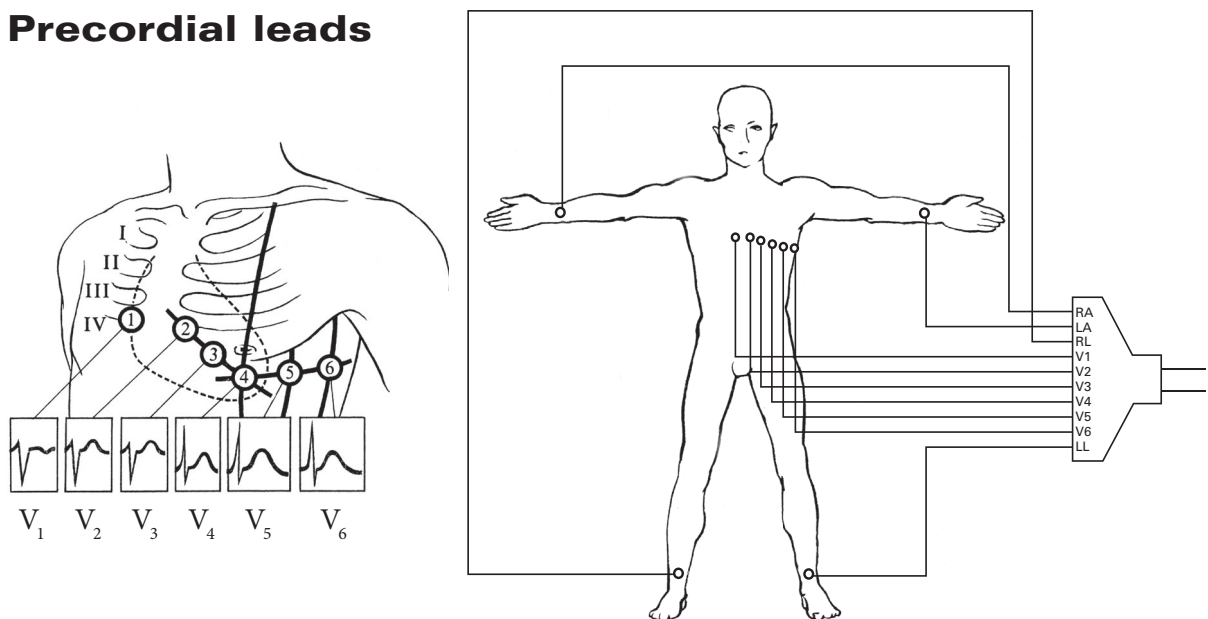


Diagram showing the lead configuration for precordial V_1 to V_6 and typical signals observed.

Caution

Read “Statement of Intended Use” on our website or in “Getting Started with PowerLab” before use.

Ordering Information:

MLA0115/D ECG 12 Lead Switch Box	/D denotes cabling for connection to any PowerLab with built-in Dual Bio Amps, FE232 Dual Bio Amp, the now obsolete FE135 Dual Bio Amp, ML135 Dual Bio Amp and ML408 Dual Bio Amp/Stimulator. (Supplied with MLA2510 shielded Lead Wires, 1 m, snap-on)
MLA0115/S ECG 12 Lead Switch Box	/S denotes cabling for connection to the now obsolete FE132 or ML132 Bio Amp. (Supplied with MLA2510 shielded Lead Wires, 1 m, snap-on)
MLA0115/A ECG 12 Lead Switch Box	/A denotes cabling for connection to an FE231 Bio Amp. (Supplied with MLA2510 shielded Lead Wires, 1 m, snap-on)

For use with:

MLA710 Chest ECG Electrode

MLA1010B Disposable ECG Electrodes

MLA700 Reusable ECG Electrodes